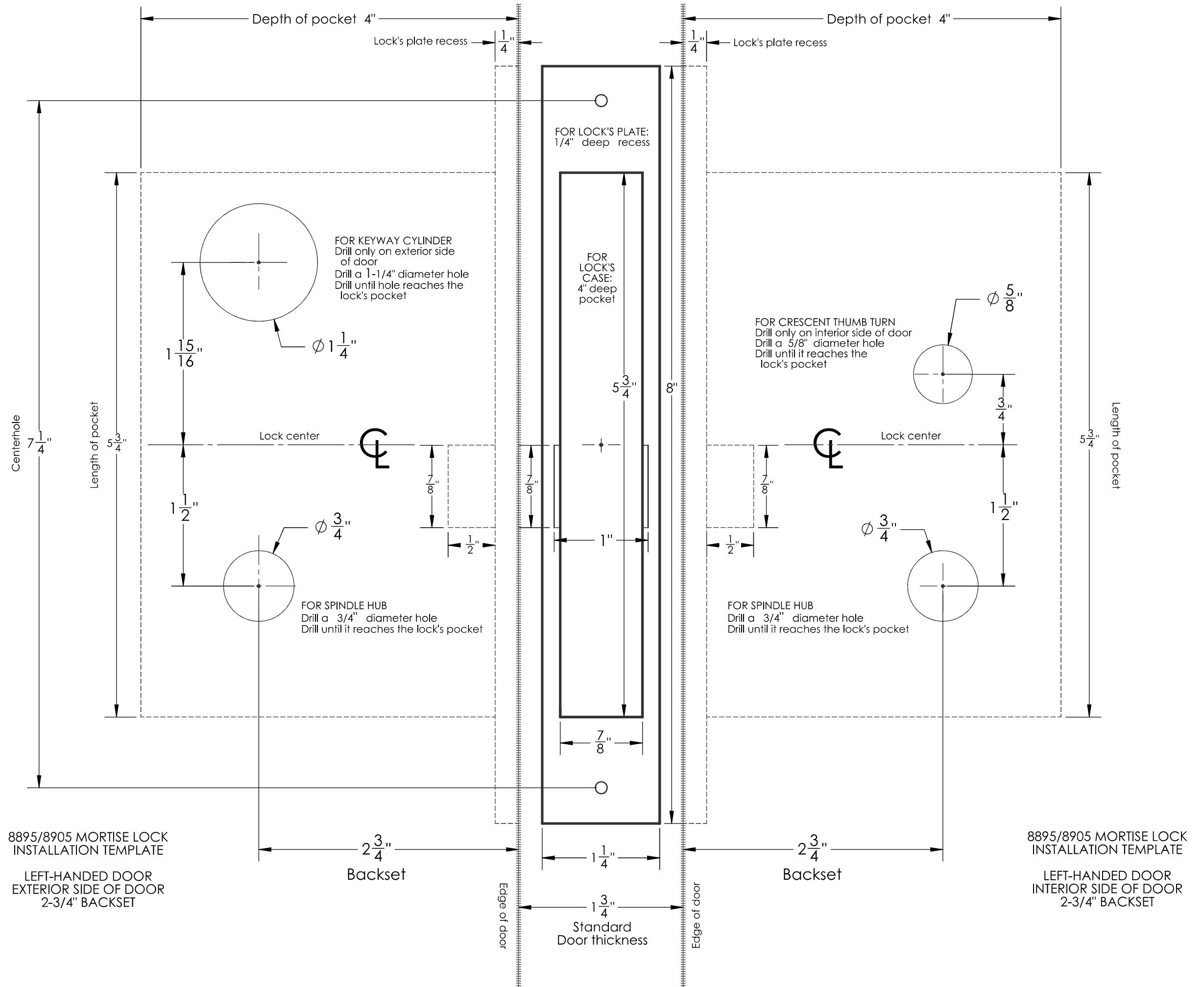


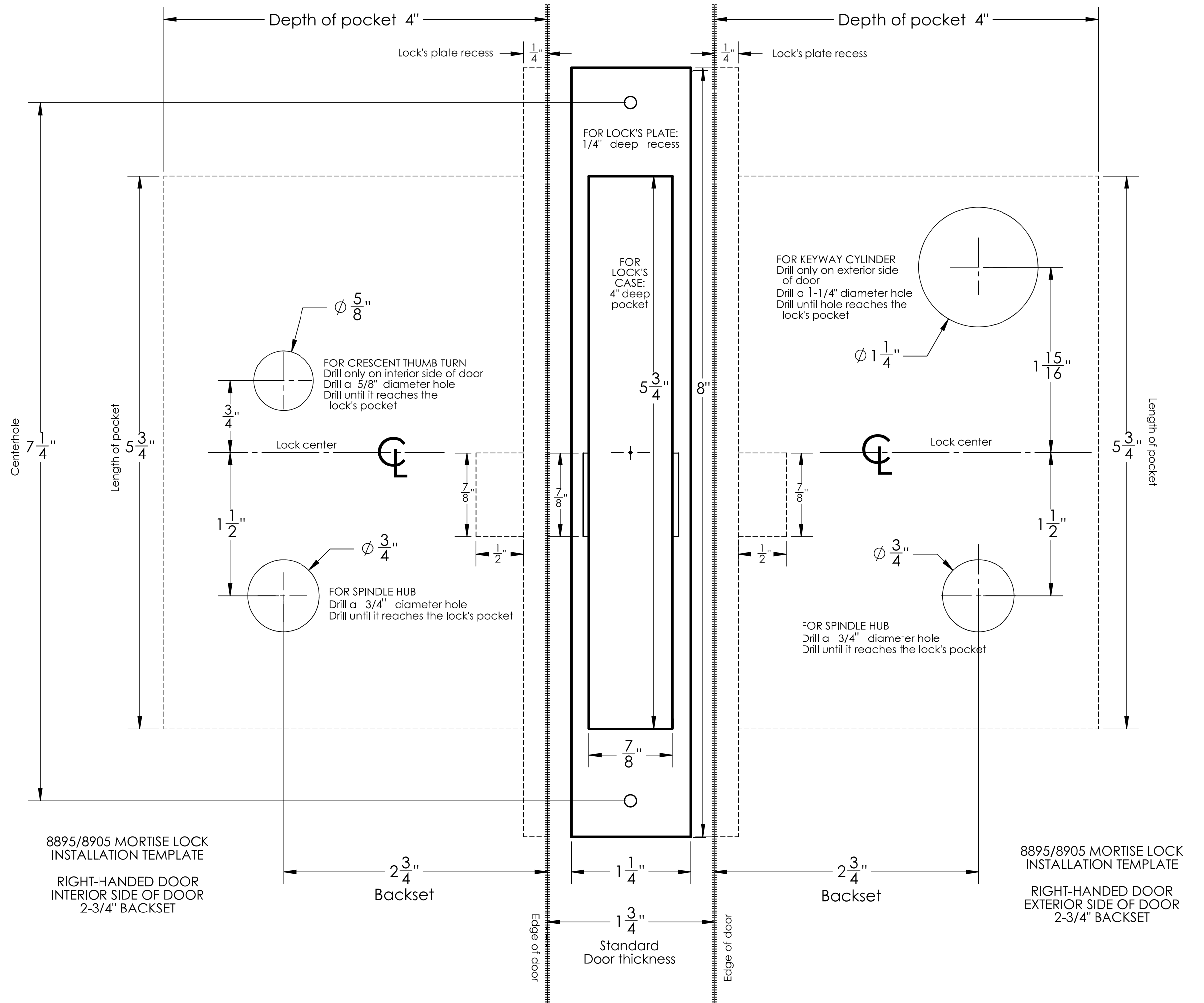
USE THIS TEMPLATE  
IF YOUR DOOR IS  
LEFT-HANDED

Mortise the lock's  
pocket first,  
then drill holes on  
both sides of doors



USE THIS TEMPLATE  
IF YOUR DOOR IS  
RIGHT-HANDED

Mortise the lock's  
pocket first,  
then drill holes on  
both sides of doors



8895/8905 MORTISE LOCK  
INSTALLATION TEMPLATE

RIGHT-HANDED DOOR  
INTERIOR SIDE OF DOOR  
2-3/4" BACKSET

8895/8905 MORTISE LOCK  
INSTALLATION TEMPLATE

RIGHT-HANDED DOOR  
EXTERIOR SIDE OF DOOR  
2-3/4" BACKSET