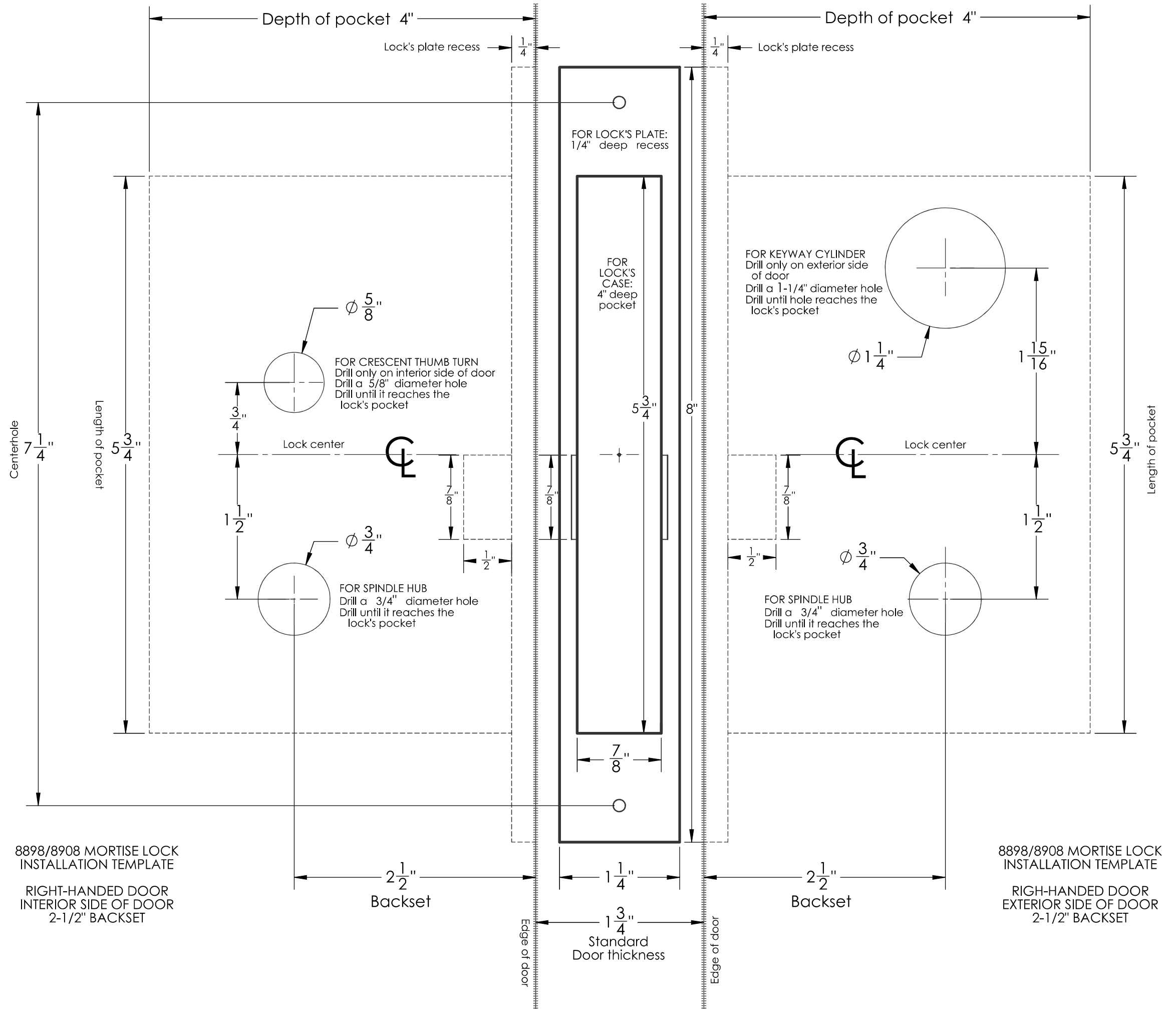


USE THIS TEMPLATE
IF YOUR DOOR IS
RIGHT-HANDED

Mortise the lock's
pocket first,
then drill holes on
both sides of doors



USE THIS TEMPLATE
IF YOUR DOOR IS
LEFT-HANDED

Mortise the lock's
pocket first,
then drill holes on
both sides of doors

